

## Pt100 temperature sensors for special applications in humid conditions up to 150 / 250 °C

High-grade Pt100 resistance sensor  
For measuring operations in very humid atmospheric conditions  
Operative over a wide range of temperatures

## Pt100 temperature sensors for applications in laboratories and medical engineering



Especially suitable for measuring temperatures in autoclaves, sterilizing units, high-temperature steam applications, vacuum applications, and freeze drying units

### Variants

Pt100 sensor, cable length = 5 m, ALMEMO® plug

### Technical data

Accuracy:	Pt100 film resistor, class A*
Protective tube	Stainless steel, diameter 3 mm, length 20 mm
Operative range	-30 to +150 °C
Cable	PFA, length 5 m
Working pressure	maximum 3.0 bar
Protective class	IP69K
ALMEMO® plug	Pt100 with resolution 0.01 K.

**Order no. FPA30K20L0020**

## Pt100 temperature sensors for industrial applications in air-conditioning / heat cabinets



Especially suitable for measuring temperatures in air-conditioning / heat cabinets with high atmospheric humidity  
Operative over a wide range of temperatures

### Variants

Pt100 sensor, cable length = 5 m, ALMEMO® plug  
Pt100 sensor, cable length = 10 m, ALMEMO® plug

### Technical data

Accuracy:	Pt100 film resistor, class B*
Protective tube	Stainless steel, diameter 4 mm, length 50 mm
Operative range	-100 to +250 °C
Cable	PFA
Protective class	IP68
ALMEMO® plug	Pt100 with resolution 0.01 K.

**Order no. FPA40ST0050S01KL0050**  
**Order no. FPA40ST0050S01KL0100**

## Digital Pt100 temperature sensor with ALMEMO® D7 connector

**new**

**ALMEMO® D7**

- The digital ALMEMO® D7 measuring plug works with its own built-in AD converter. The linearization of the Pt100 - characteristic curve is calculated according to DIN IEC 751 (no approximation method).
- The overall accuracy of the measurement is independent of the ALMEMO® V7 display unit/data logger. The complete measuring chain, consisting of the Pt100 - sensor and the connected ALMEMO® D7 measuring plug,

can be calibrated. Increased accuracy is achieved during calibration by a multi-point adjustment of the temperature sensor.

- For all ALMEMO® V7 measuring instruments / data loggers

**Technical data for the sensor:** see above

**Technical data for the ALMEMO® D7 measuring plug:** see chapter 2

### Variants

Digital Pt100 sensor, cable length = 5 m, with ALMEMO® D7 connector  
Digital double Pt100 sensor: 2 Digital Pt100 sensors, cable length 5 m each, mounted on 1 ALMEMO® D7 double connector

**Order no. FPD740ST0050S01KL0050**

**Order no. FPD740ST0050S21KL0050**

### Accessories:

PTFE tube (high emissivity), open on both sides, length approx. 70 mm, for probe diameter 4 mm.

**Order no. ZT9000TS41**

\* Range of validity see page 07.03

DAkKS or factory calibration KT90xx temperature for sensor or measuring chain (sensor + device) (see chapter Calibration certificates)  
DAkKS calibration meets all the requirements regarding test resources laid down in DIN EN ISO/IEC 17025.

**Digital precision resistance sensor Pt100 up to 400 °C  
with resolution of 0.001 K as reference sensor,  
with ALMEMO® D7 connector for ALMEMO® V7 measuring devices / data logger**



Digital precision resistance sensor Pt100 FPD723L0250A3D  
For immersion measurements in air, gases and liquids

10/2021 • We reserve the right to make technical changes.

## Technical data and functions

Digital precision resistance sensor with highest accuracy and linearity for temperature measurements in a wide temperature range.

Highest resolution 0.001 K over the entire measuring range.

Application as reference probe for comparison measurements in research, development, quality assurance and production processes.

For all ALMEMO® V7 measuring instruments/data loggers, including ALMEMO® 710, 809, 500.

The digital ALMEMO® D7 measuring plug operates with its own built-in AD converter. The linearization of the Pt100 characteristic is calculated according to DIN IEC 751 (no approximation method).

The overall accuracy of the measurement is independent of the ALMEMO® V7 display unit/data logger. The complete measuring chain, consisting of the Pt100 - sensor and the connected ALMEMO® D7 measuring plug, can be calibrated.

Highest accuracy is achieved during calibration by a multi-point adjustment of the temperature sensor.

The digital sensor is supplied with a DAkkS calibration certificate incl. multi-point adjustment.

## Technical data

<b>Measuring element:</b>	Pt100 wire wound
Class:	1/10 B (DIN EN 60751) at 0°C
Measuring tip:	Application range: -50°C...+400°C
response time T90:	5 s
Nominal length:	250 mm
Sensor tube:	stainless steel, diameter 3 mm
Connection cable:	2 m FEP/silicone
<b>ALMEMO® D7 measuring connector</b>	
Measuring range:	see sensor range
Resolution:	0.001 K

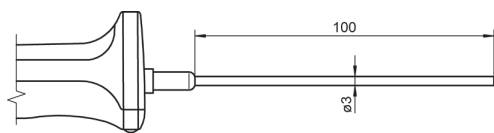
AD converter:	Delta-Sigma
Conversion time	3.4 seconds
Measuring current:	approx. 1 mA
Linearization:	Calculation method (no approximation method)
Accuracy:	± 0.015K ± 2 digits
Nominal temperature:	22°C ± 2 K
Temperature drift:	0.003 %/K (30ppm)
Supply voltage:	starting at 6 V from ALMEMO® device
Current consumption:	approx. 9 mA

Accessory	Order no.
Aluminum profile case for 1 probe (up to 500 mm length)	ZB9000TK1

Standard delivery	Order no.
Digital precision resistance sensor Pt100 as reference sensor, with cable and ALMEMO® D7 connector. Incl. DAkkS calibration certificate (2 temperature points at 0°C and 100°C incl. multi-point adjustment).	FPD723L0250A3D

DAkkS or factory calibration KT90xx temperature for sensor or measuring chain (sensor + device) (see chapter Calibration certificates)  
DAkkS calibration meets all the requirements regarding test resources laid down in DIN EN ISO/IEC 17025.

## Pt100 sensor with handle FPA 106 LxxxxH

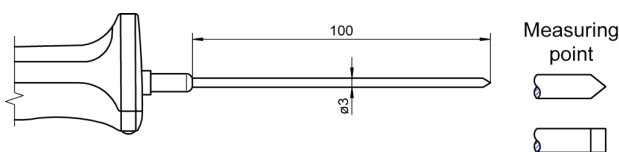


Accuracy: Pt100 film resistor, class B\*  
 Measuring tip: Operative range -40...+400 °C  
 Sheath element, stainless steel  
 $T_{90}$ : \* 8 s  
 Handle: \* 127 mm  
 Cable: 1.5 m FEP/silicone

L = 100 mm **Order no. FPA106L0100H**

For immersion measurement

## Pt100 sensor with handle FPA 123 LxxxxH

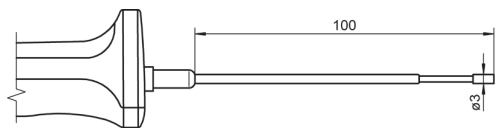


Accuracy: Pt100 film resistor, class B\*  
 Measuring tip: Operative range -40...+400 °C  
 Penetrating tip  
 $T_{90}$ : \* 8 s  
 Handle: \* 127 mm  
 Cable: 1.5 m FEP/silicone

L = 100 mm **Order no. FPA123L0100H**

For immersion measurement in plastic and pasty substances

## Pt100 sensor with handle FPA 124 LxxxxH



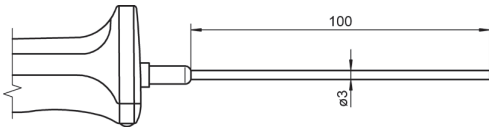
Accuracy: Pt100 film resistor, class B\*  
 Measuring tip: Operative range -40...+300 °C  
 Silver rivet, level  
 $T_{90}$ : \* 10 s  
 Handle: \* 127 mm  
 Cable: 1.5 m FEP/silicone

L = 100 mm **Order no. FPA124L0100H**

For surface measurement and immersion measurement

\* Range of validity see page 07.03

## NTC sensor with handle FNA 106 LxxxxH

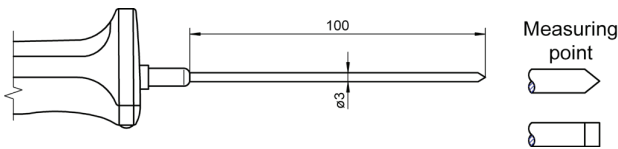


For immersion measurement

Accuracy: NTC, see page 07.04  
 Measuring tip: Operative range -20...+100 °C  
 Sheath element, stainless steel  
 $T_{90}$ : \* 8 s  
 Handle: \* 127 mm  
 Cable: 1.5 m PVC

L = 100 mm      **Order no. FNA106L0100H**

## NTC sensor with handle FNA 123 LxxxxH

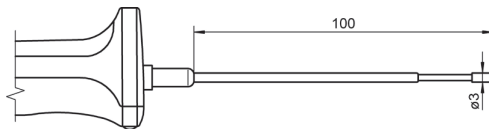


For immersion measurement in plastic and pasty substances

Accuracy: NTC, see page 07.04  
 Measuring tip: Operative range -20...+100 °C  
 Penetrating tip  
 $T_{90}$ : \* 8 s  
 Handle: \* 127 mm  
 Cable: 1.5 m PVC

L = 100 mm      **Order no. FNA123L0100H**

## NTC sensor with handle FNA 124 LxxxxH



For surface measurement and immersion measurement

Accuracy: NTC, see page 07.04  
 Measuring tip: Operative range -20...+100 °C  
 Silver rivet, level  
 $T_{90}$ : \* 10 s  
 Handle: \* 127 mm  
 Cable: 1.5 m PVC

L = 100 mm      **Order no. FNA124L0100H**

## NTC sensor FNA 305

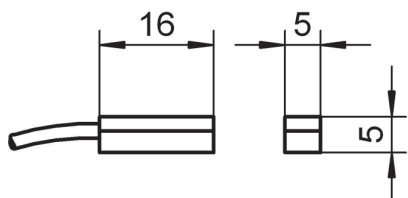


For room air measurement

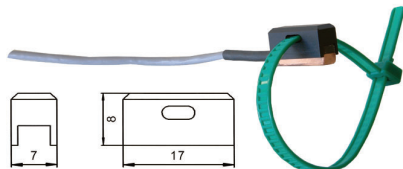
Accuracy: NTC, see page 07.04  
 Measuring tip: Operative range -10...+60°C  
 (non-condensing), Protective tube  
 in stainless steel  
 diameter = 3.0mm, length = 50mm  
 mounted directly on ALMEMO® connector  
 $T_{90}$ : 8 s

L = 50 mm      **Order no. FNA305**  
 (No variants available)

## Pt100 sensor FPA 611 x



For surface measurement



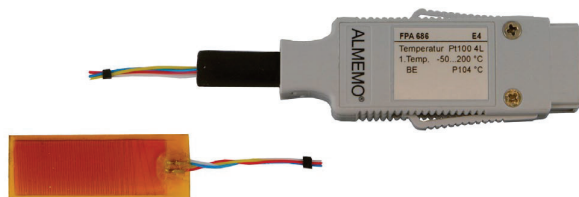
Accuracy: Pt100 film resistor, class B\*  
 Measuring tip: Operative range see below  
 Copper, level  
 Improved thermal transfer thanks to innovative sensor element and new contact technology

$T_{90}^*$ : 20 s  
 Cable: see below

Surface sensor  
 -10...+90°C, Cable PVC, 2 m **Order no. FPA611**  
 -10...+110°C, Cable, PFA, 3m for more demanding mechanical stress ALMEMO® connector, resolution 0.01 K  
**Order no. FPA611S01**

Accessories  
 Fixture for fastening with cable ties **Best-Nr. ZB9611RM**

## Pt100 film sensor FPA 686



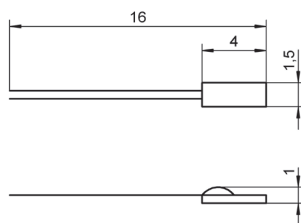
For surface measurement

Accuracy: Pt100 wire-wound, class B\*  
 Messfläche: Operative range -50...+200 °C,  
 temperature-resistant foil,  
 15 x 40 mm, approx. 0.5 mm thick

$T_{90}^*$ : 2 s  
 Cable: Stranded wire PFA, 4-wire twisted

Length 2 m **Order no. FPA686**  
 Length 10 m **Order no. FPA686L10**

## Pt100 ceramic chip sensor element FP 0802



Unprotected sensor element for constructing your own sensors

Accuracy: Pt100 film resistor, class B\*  
 Measuring tip: Operative range -40...+400 °C  
 Ceramic chip sensor

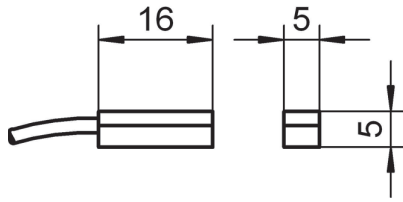
Connection wires: 10 mm, bare

Ceramic chip sensor **Order no. FP0802**

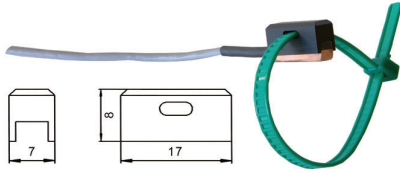
\* Range of validity see page 07.03

DAkKS or factory calibration KT90xx temperature for sensor or measuring chain (sensor + device) (see chapter Calibration certificates)  
 DAkKS calibration meets all the requirements regarding test resources laid down in DIN EN ISO/IEC 17025.

## NTC sensor FNA 611



For surface measurement



Accuracy: NTC, see page 07.04  
 Measuring tip: Operative range -10...+90 °C  
 Copper, level  
 $T_{90}$ : \* 20 s  
 Cable: 2 m PVC

Surface sensor **Order no. FNA611**

Accessories  
 Fixture for fastening with cable ties **Best-Nr. ZB9611RM**

## NTC sensor FN 0001 K



Unprotected sensor element with cable

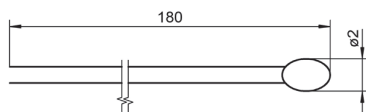


Accuracy: NTC, see page 07.04  
 Measuring tip: Sensor element, unprotected  
 Operative range: -20...+100°C  
 Connection wires: appr. 180 mm, fluoropolymer insulation  
 Connecting cable: 2 meters, PVC, thin stranded pick-up wire, Operative range -10 to +90 °C  
 Cable juncture, in shrink-fit

NTC sensor with cable, free ends **Order no. FN0001K**

Option:  
 ALMEMO® connector including assembly  
 Single connectors for 1 sensor Order no. OT9040AS  
 Double connector for 2 sensors Order no. OT9040AS2

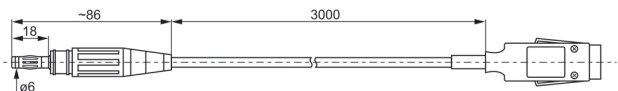
## NTC sensor element FN 0001



Unprotected sensor element for constructing your own sensors

Accuracy: NTC, see page 07.04  
 Measuring tip: Operative range -20...+100 °C  
 Sensor  
 Connection wires 180 mm, fluoropolymer insulation  
 Sensor **Order no. FN0001**

## Pt100 Plug-in laboratory sensor FPA 416

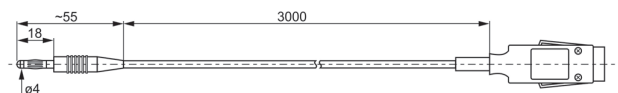


Measuring element integrated in the socket of a 6 mm laboratory connector made of brass (nickel-plated).

Accuracy: Pt100 film resistor, class B\*  
 Measuring tip: Operative range -40...+150 °C  
 $T_{90}^*$ : 15 s  
 Cable: Silicone/FEP 3m  
 ALMEMO® connector: resolution 0.01 K

Plug-in laboratory sensor **Order no. FPA416**

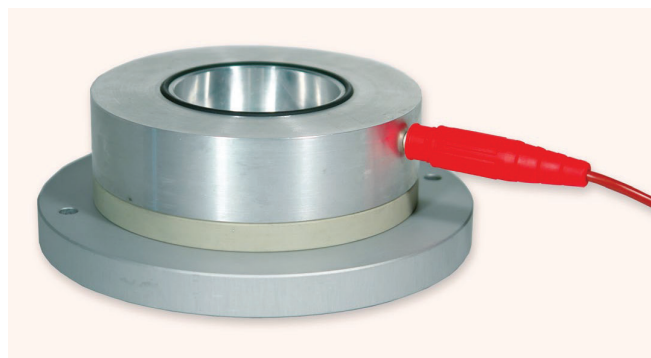
## Pt100 Plug-in laboratory sensor FPA 414



Measuring element integrated in the socket of a 4 mm laboratory connector made of brass (gold-plated).

Accuracy: Pt100 film resistor, class B\*  
 Measuring tip: Operative range -40...+150 °C  
 $T_{90}^*$ : 15 s  
 Cable: Silicone/FEP 3m  
 ALMEMO® connector: resolution 0.01 K

Plug-in laboratory sensor **Order no. FPA414**



Plug-in laboratory sensor, examples of use  
 Measuring object with hole for inserted PT100 plug-in laboratory sensor.

\* Range of validity see page 07.03

## Pt100 cable sensor



Inexpensive resistance-based temperature sensors.  
 For immersion measurements in air and gases.  
 Rigid protective tube made from stainless steel  
 A wide variety of cable variants.  
 Operating temperature (depending on variant) -40 to +400°C.

**Please note:**  
 Only for usage in a dry environment

### Technical data

Accuracy:	Pt100 film resistor, class B* (no other variants in stock)
Protective tube:	Diameter, length see Variants, stainless steel 1.4301
Junction of protective tube / connecting cable:	Direct, hard-crimped for dry uses
Cables:	Length = 1.5 meters, Other lengths are available as options. Cable diameter is never larger than the diameter of the protective tube.
Operating temperature:	see variants, Always for whole sensor (i.e. sensor tip and cable)
ALMEMO® connector:	resolution 0.01 K.

**Note:**  
 For temperature sensors suitable for usage in humid environments (e.g. climatic chamber) see page 07.21



## Variants

### With FEP / FEP cable (black),

Operative range -40...+250°C:

Diameter	Length	Order no.
3.0 mm	50 mm	FPA30K03L0050
3.0 mm	100 mm	FPA30K03L0100
4.0 mm	50 mm	FPA40K03L0050
4.0 mm	100 mm	FPA40K03L0100

**A longer cable is available as an option**

Total length 5 m	OPK03L0050
Total length 10 m	OPK03L0100

### With FEP / silicone cable (red),

Operative range -40...+200°C:

Diameter	Length	Order no.
5.0 mm	50 mm	FPA50K01L0050
5.0 mm	100 mm	FPA50K01L0100
6.0 mm	50 mm	FPA60K01L0050
6.0 mm	100 mm	FPA60K01L0100

**A longer cable is available as an option**

Total length 5 m	OPK01L0050
Total length 10 m	OPK01L0100

### Cable with glass-fiber / glass-fiber / VA wire shielding,

Operative range -40...+400°C:

Diameter	Length	Order no.
5.0 mm	50 mm	FPA50K06L0050
5.0 mm	100 mm	FPA50K06L0100
6.0 mm	50 mm	FPA60K06L0050
6.0 mm	100 mm	FPA60K06L0100

**A longer cable is available as an option**

Total length 5 m	OPK06L0050
Total length 10 m	OPK06L0100

\* Range of validity see page 07.03

DAkkS or factory calibration KT90xx temperature for sensor or measuring chain (sensor + device) (see chapter Calibration certificates)  
 DAkkS calibration meets all the requirements regarding test resources laid down in DIN EN ISO/IEC 17025.



## Pt100 glass thermometer with immersion depths as per ASTM



### Operative range:

For immersion measurement in liquid media at low immersion depths.

### Technical data

Accuracy:	Pt100 wire-wound, class A*
Measuring tip	Operative range -50 to +310 °C Glass, tapered Diameter = 3 mm, length = 15 mm
Shaft	Glass, Diameter = 6 mm  NL= 250 mm (total nominal length) Labeling codes for immersion depths : identification rings on the shaft as per ASTM specifications (American Society for Testing and Materials)
T <sub>90</sub>	2.5 seconds
Cable junction sleeve	Stainless steel, 8 x 40 mm Cable exit secured with shrink-fit sleeve
Cable	2 meters, FEP / silicone
ALMEMO® connector	Resolution 0.01 K

### Variants

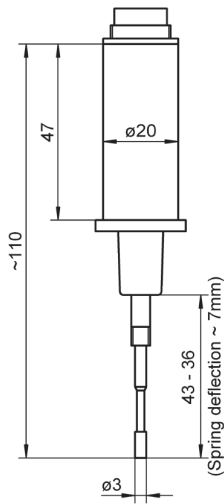
Pt100 glass thermometer with immersion depths as per ASTM specifications, with ALMEMO® connector (including 2-meter FEP / silicone cable)

### Order no.

**FPA910**

\* Range of validity see page 07.03

## Insertable sensor NiCr-Ni with round mounting plug T 820-6



### Operative range:

Measuring tip, spring-loaded, for surface and immersion measurement.

### Accessories:

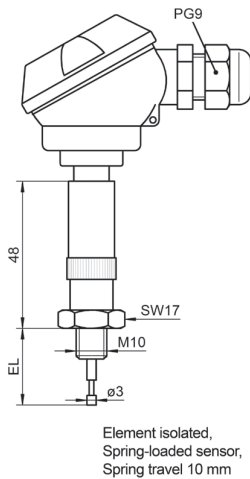
ALMEMO® connecting cable, 2 meters Order no. ZA9020BK2

### Technical data

Accuracy:	NiCr-Ni class 2*
Measuring tip	Operative range -40 to +400 °C Silver rivet, level, spring-loaded not electrically isolated
T <sub>90</sub> *	3 s
Insert length	60 mm (see layout drawing)
Fixture	Plastic, Ø 20 mm, resistant up to +120 °C
Connection	Round mounting plug

Types	Order no.
Insertable sensor NiCr-Ni with round mounting plug	FT98206

## Insertable sensor NiCr-Ni with terminal head FT 0477



### Operative range:

Spring-loaded measuring tip, for surface and immersion measurement

### Options:

3-meter compensation line PVC, mounted, free ends:  
Order no. OT9020K02L0030  
ALMEMO® plug including assembly for NiCr-Ni-sensor  
Order no. OT9020AS

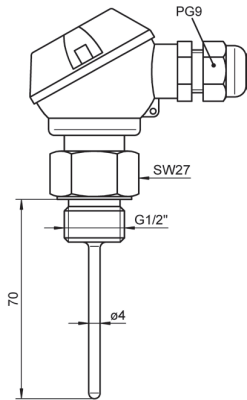
### Technical data:

Accuracy:	NiCr-Ni class 2*
Measuring tip:	Operative range -40 to +400°C Silver rivet, level, spring-loaded, electronically isolated
Thread:	M10
Insert length:	25 mm (see layout drawing)
Terminal head:	Clamp connector

Types	Order no.
Screw-in sensor NiCr-Ni with terminal head	FT0477

\* Range of validity see page 07.03

## Insertable sensor Pt100 with terminal head FP 0463



### Operative range:

For immersion measurements,  
pressure-sealed up to 15 bar.

### Options:

3 meters cable PVC, assembled,  
free ends  
OT9030K02L0030  
ALMEMO® connector including  
assembly for Pt100 sensor  
OT9030AS

### Technical data

Accuracy:	Pt100 film resistor, class B*
Sensor tube	Stainless steel
Operative range:	-40...+350°C
Thread	1/2", with copper ring seal, pressure-sealed up to 15 bar
Insert length	70 mm (see layout drawing)
Terminal head	Clamp connector

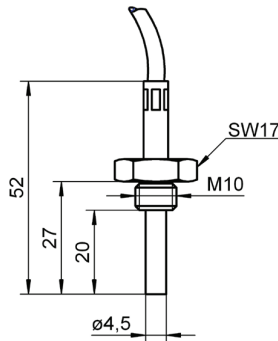
### Variants

Insertable sensor with terminal head

### Order no.

**FP0463**

## Screw-in sensor Pt100, NiCr-Ni with fitted cable Fx 0710 L27M10



### Operative range:

For immersion measurement

### Option:

ALMEMO® connector  
including assembly  
for Pt100 sensors:  
Order no. OT9030AS

### Technical data FP0710L27M10

Accuracy:	Pt100 film resistor, class B*
Sensor material:	stainless steel
Operative range:	-40 to +200 °C
Thread:	M10
Insert length:	27 mm (see layout drawing)
Cable:	3 meters, FEP / wire shielding, / FEP free ends

### Variants

Screw-in sensor Pt100  
with cable, free ends

Option cable length 5 meters

### Order no.

**FP0710L27M10**

**OPK04L0050**

### Technical data FT0710L27M10

Accuracy:	NiCr-Ni class 2*
Sensor material:	stainless steel
Operative range:	-100 to +400 °C
Thread:	M10
Insert length:	27 mm (see layout drawing)
Cable:	3 meters, thermal line glass filament / glass filament / VA wire shielding, free ends

### Variants

Screw-in sensor NiCr-Ni  
with cable, free ends

Option cable length 5 meters

### Order no.

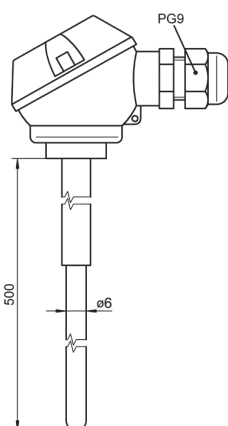
**FT0710L27M10**

**OTK06L0050**

\* Range of validity see page 07.03

DAkks or factory calibration KT90xx temperature for sensor or measuring chain (sensor + device) (see chapter Calibration certificates)  
DAkks calibration meets all the requirements regarding test resources laid down in DIN EN ISO/IEC 17025.

## Insertable sensor PtRh-Pt (S) with terminal head FT 0426x



### Operative range:

For immersion measurements, up to 1400 or 1600 °C.

### Accessories

Aluminum profile case for 1 sensor with connection head (up to 700 mm length)  
Order no. ZB9000TK2

Replacement ceramic protection tube d= 6 mm, for FT0426x  
Order no. ZB9006SR0500

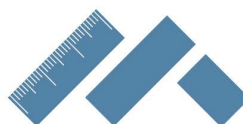
### Options

ALMEMO® connector with assembly Order no. OT9020AS

### Technical data

Accuracy:	Thermowire PtRh-Pt (S) class 1*
Measuring tip	Ceramic protection tube
Operative range	see under variants
Insert length	500 mm
Protective tube	Ceramic, C799, d= 6 mm, replaceable
Cable	2-meter compensation line FEP/Silikon, free ends

Variants	Order no.
Insertable sensor PtRh-Pt type S with terminal head and compensation lines, free ends	
T <sub>max</sub> = 1400°C, thermowire Ø = 0.35 mm,	<b>FT04261</b>
T <sub>max</sub> = 1600°C, thermowire Ø = 0.5 mm,	<b>FT04262</b>



**MetiorLAB**

+385 91 5281 812  
+385 95 8615 902  
INFO@METIORLAB.HR

\* Range of validity see page 07.03